



Parks
Canada

Parcs
Canada

Canada

Fire Management and Wildfire Risk Reduction in PEI National Park: An opportunity for collaboration



Who We Are: Roles and Responsibilities

Karen Jans – Field Unit Superintendent, PEI National Park

Kim Gamble – Manager, Resource Conservation, PEI National Park

Jennifer Stewart – Manager, External Relations, PEI National Park

Robyn Caissie – Fire & Visitor Safety Coordinator, PEI National Park

Hailey Paynter – Landscape Ecologist, PEI National Park

Scott Murphy – National Fire Management Officer, National Fire Management Division

Outline:

- What we've heard
- Post-Fiona
- PEINP Fire Management
 - Prevention
 - Preparedness
 - Response
- Commitment to working together





We have suffered one of the most historic and damaging storms in PEI history and the North Shore area was one of the worst hit areas.

Stanhope Campground 2023 – Post Fiona



BEFORE CLEAN UP



AFTER CLEAN UP

PEI National Park Fire Management Plan

**PRINCE EDWARD ISLAND
NATIONAL PARK**

**FIRE MANAGEMENT PLAN
2015-2025**



- Fire Management Plans are updated every 10 years
- Emphasis is on wildfire prevention and control
- 3 pillars of PEI National Park's fire program:
 - Prevention (including risk reduction)
 - Preparedness
 - Response

PEI National Park – Fire Management Plan - Prevention



PEI

No fires permitted in P.E.I. National Park



Fires are not allowed in P.E.I. National Park until further notice

CBC News - Posted: Aug 09, 2020 3:25 PM ADT | Last Updated: August 14, 2020



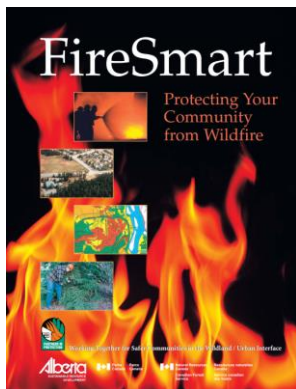
No fires will be permitted in Prince Edward Island National Park until further notice, says Parks Canada. (Tracy Lightfoot/CBC)

comments

Due to extremely dry conditions, a fire ban has been issued for Prince Edward Island National Park to reduce the risk of forest fires, according to a Parks Canada news release.

PEI National Park – Fire Management Plan - Prevention

FireSmart – 7 Disciplines



Education



Emergency Planning



Vegetation Management



Legislation



Development



Interagency Cooperation



Cross Training

PEI National Park – Fire Management Plan – Prevention

FireSmart – Vegetation Management



Before and after
wildfire risk reduction
treatment.



PEI National Park – Fire Management Plan – Prevention

Vegetation Management – Building Resilient Forests

- Biodiversity is key to a healthy and resilient forest ecosystems
- Since 2017, PEINP has planted over 65,000 trees
- Species such as red maple, red oak, sugar maple and yellow birch are fire resistant and climate resilient



Coniferous trees are highly flammable.



Deciduous trees are less flammable.



PEI National Park – Fire Management Plan - Prevention

Compliance and Enforcement



- Area Closures
- Fire Restrictions
- Increased patrols and emphasis on reporting
- Investigation of known/ suspected human-caused fires
- Charges laid under Parks Canada Fire Regulations

PEI National Park – Fire Management Plan – Prevention

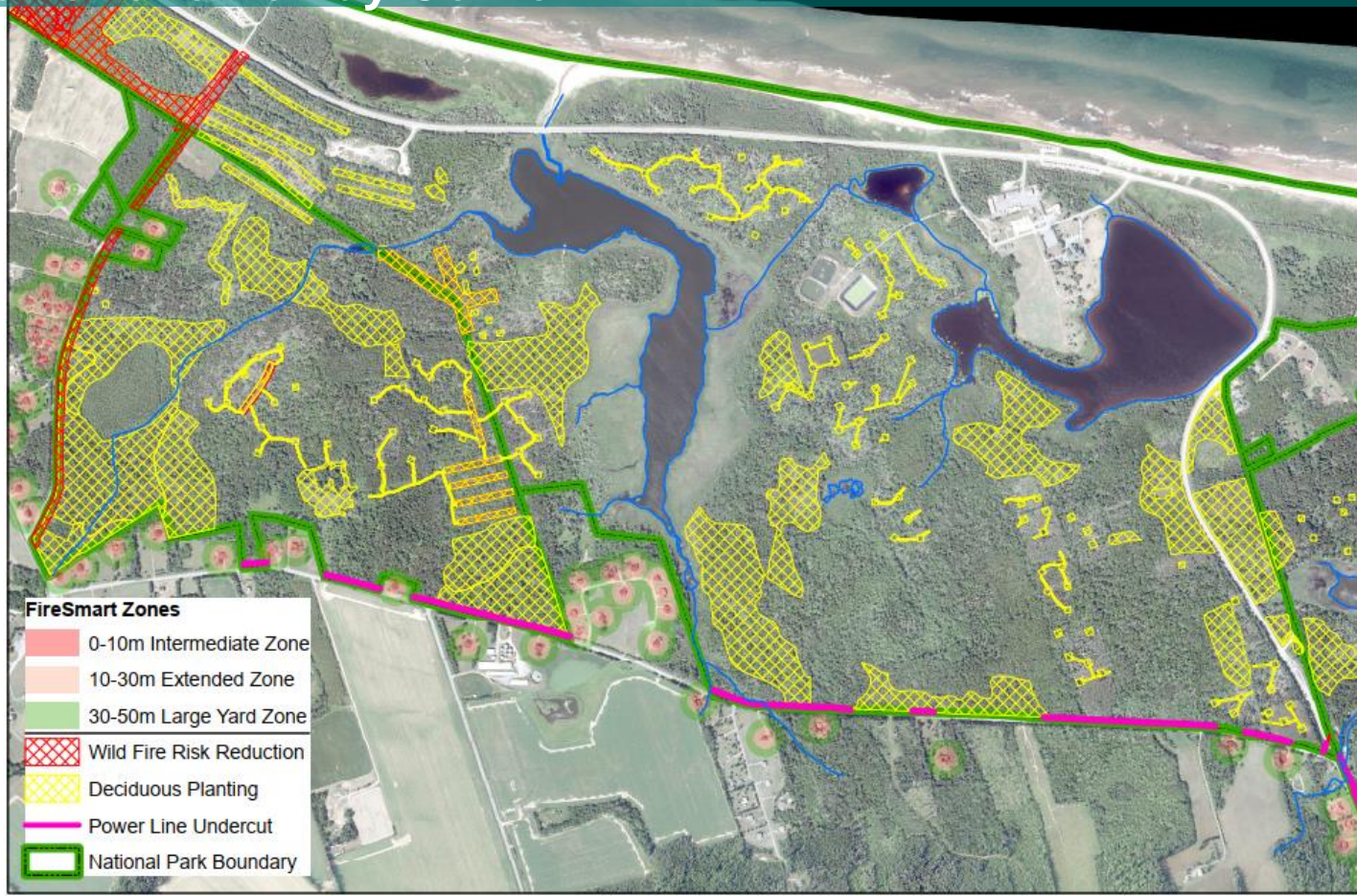
Bayshore to Stanhope Lane



FireSmart Zones	
	0-10m Intermediate Zone
	10-30m Extended Zone
	30-50m Large Yard Zone
	Wild Fire Risk Reduction
	Deciduous Planting
	National Park Boundary

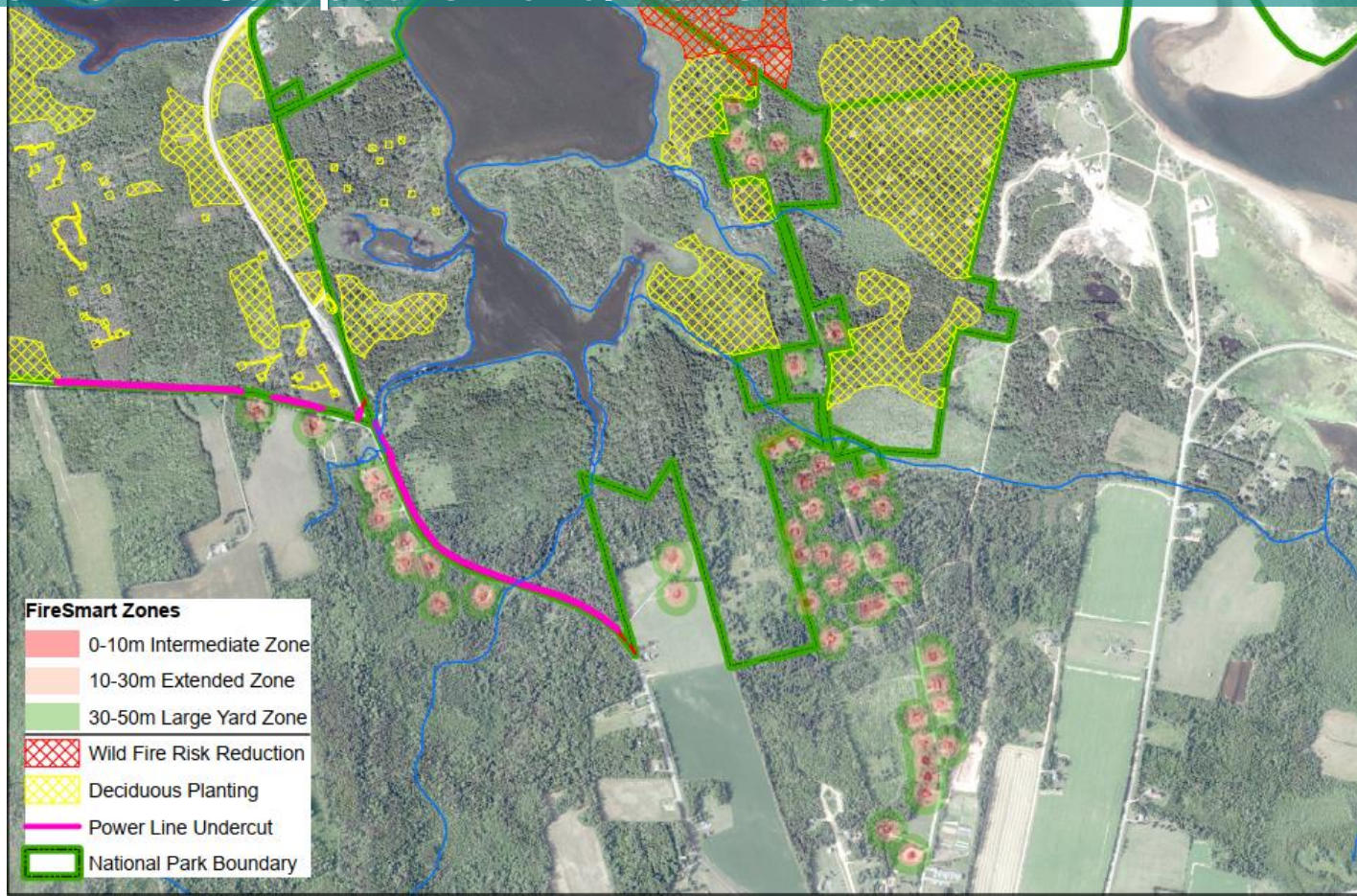
PEI National Park – Fire Management Plan – Prevention

Stanhope Lane to Dalvay Corner



PEI National Park – Fire Management Plan – Prevention

Dalvay Corner to Campbells Pond/Watts Road



PEI National Park – Fire Management Plan – Prevention

#	Site Description	Area to Treat (ha)	Completed
PRIORITY I SITES			
1	Stanhope Campground	6.56	YES
2	Fire Break, East Side of Stanhope Lane	2.7	YES
3	South End of Cavendish Campground	4.66	YES
PRIORITY II SITES			
4	Ross Lane – Parking Lot	0.60	YES
5	Stanhope Beach Complex	0.25	YES
6	Park Service Area – Stanhope	16.9	Partially
7	North of Cavendish VIC	4.45	YES
8	SW Corner of Lake of Shining Waters	3.80	YES
PRIORITY III SITES			
9	Watts Road Trail Head	5.35	YES
10	Stand West of John Archies	7.00	YES
11	Northeast Corner of Long Pond	10.19	NO
12	North of Shaw's Resort	7.36	NO
13	Green Gables Golf Course Maintenance Area	10.49	NO
14	Brackley Beach Crown Lands	8.31	NO

#	Site Description	Area to Treat (ha)	Completed
POST STORM ACTIONS: ADAPTIVE MANAGEMENT SITES			
DORIAN	Route 6/Hammie's Lane clean up (Cavendish)		YES
DORIAN	Cavendish Campground extensive clean up		YES
DORIAN	Graham's Lane clean up		YES
DORIAN	Trails and roads clean up		YES
DORIAN	Cawnpore Lane/VIC extended fuel modification		YES
FIONA	Eastern Road and Route 6 Powerline Corridor		YES
FIONA	Stanhope Lane Powerline Corridor (West)		YES
FIONA	Gulf Shore Parkway clearing		YES
FIONA	Stanhope and Cavendish Campground clean up		YES
FIONA	Trails clean up		YES
FIONA	MacMillan Lane clearing		YES
FIONA	Collaborative boundary clean up (e.g. Hummingbird Lane, Watts Road, Boyle's Cres, etc)		YES

PEI National Park – Fire Management Plan - Preparedness

CONTRACTUAL ARRANGEMENT
REGARDING A FIRE CO-OPERATION ZONE

BETWEEN

THE PROVINCE OF PRINCE EDWARD ISLAND
FORESTS, FISH AND WILDLIFE DIVISION
(hereinafter called Province of PEI)

AND

PARKS CANADA AGENCY
a body corporate established under section 3 of the Parks Canada Agency Act, S.C. 1998 c.
31
(hereinafter called "Parks Canada")
Collectively known as the "Parties"

This contractual arrangement made in duplicate on 7th day of March, 2018.

1. Purpose

- 1.1 This contractual arrangement describes the relationship between the Province of PEI and Parks Canada regarding cooperative fire management activities and reimbursement of expenses for initial fire response and suppression in a Fire Co-operation Zone.
- 1.2 When a fire is burning along the boundaries of a National Park, National Historic Site or Federal Crown land administered by Parks Canada (See Annex A), within the Fire Co-operation Zone (described in Annex B) and it is reasonable that a fire will escape the responsible parties jurisdiction, both Parties will actively communicate to coordinate responses and to work collaboratively.
- 1.3 The Parties intend to work cooperatively within and consistent with their respective mandates to promote an effective working relationship and cooperation in the management of fire.

2. Scope of Work

- 2.1 A list of the National Parks and National Historic Sites identified as part of this agreement is provided in Annex A.
- 2.2 The details of the services to be provided by one Party to the other Party are outlined in Annex B.
- 2.3 If a fire event occurs within the Fire Cooperation Zone and it is reasonable to escape the Responsible Parties boundaries, notification will be made to the other Party. During the initial



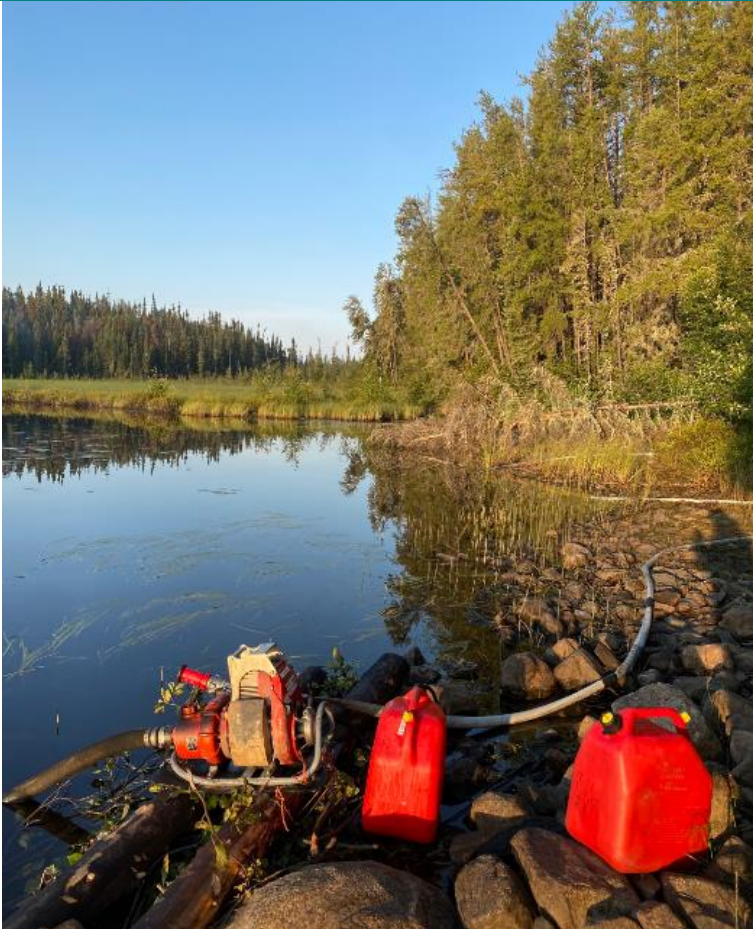
PEI National Park – Fire Management Plan - Preparedness



PEI National Park
fire team works
diligently to:

- Monitor fire risk;
- Take action to prevent wildfires;
- Be prepared to respond.

PEI National Park – Fire Management Plan - Response



Memorandums of Understanding are in place with municipal fire departments and provinces (PEI, NB, NS, NL) for response to wildfires

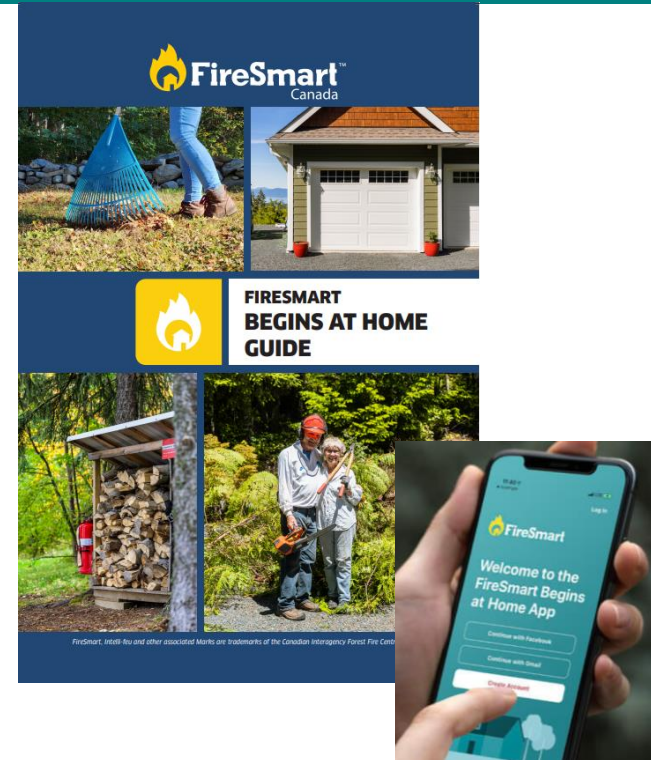
Access to Parks Canada firefighters, equipment and fire specialist in the region and across the country

Fire Management moving forward

Working together will allow us to develop landscape/community scale plans that will work to reduce the risk of wildfire ignition and spread

Parks Canada is committed to:

- Continuing vegetation management in priority areas
- Developing a new, more holistic wildfire risk reduction strategy that:
 - Addresses all 7 FireSmart Disciplines
 - Incorporates concerns from community and stakeholders
 - Identifies opportunities for collaboration
 - Sharing of knowledge and technical expertise
 - Involvement in community wildfire risk reduction planning



Check local burn restrictions:
[Burn Restrictions](#) | [Government of Prince Edward Island](#)

Questions/Discussion

